

Sumitomo Mitsui Banking Corporation

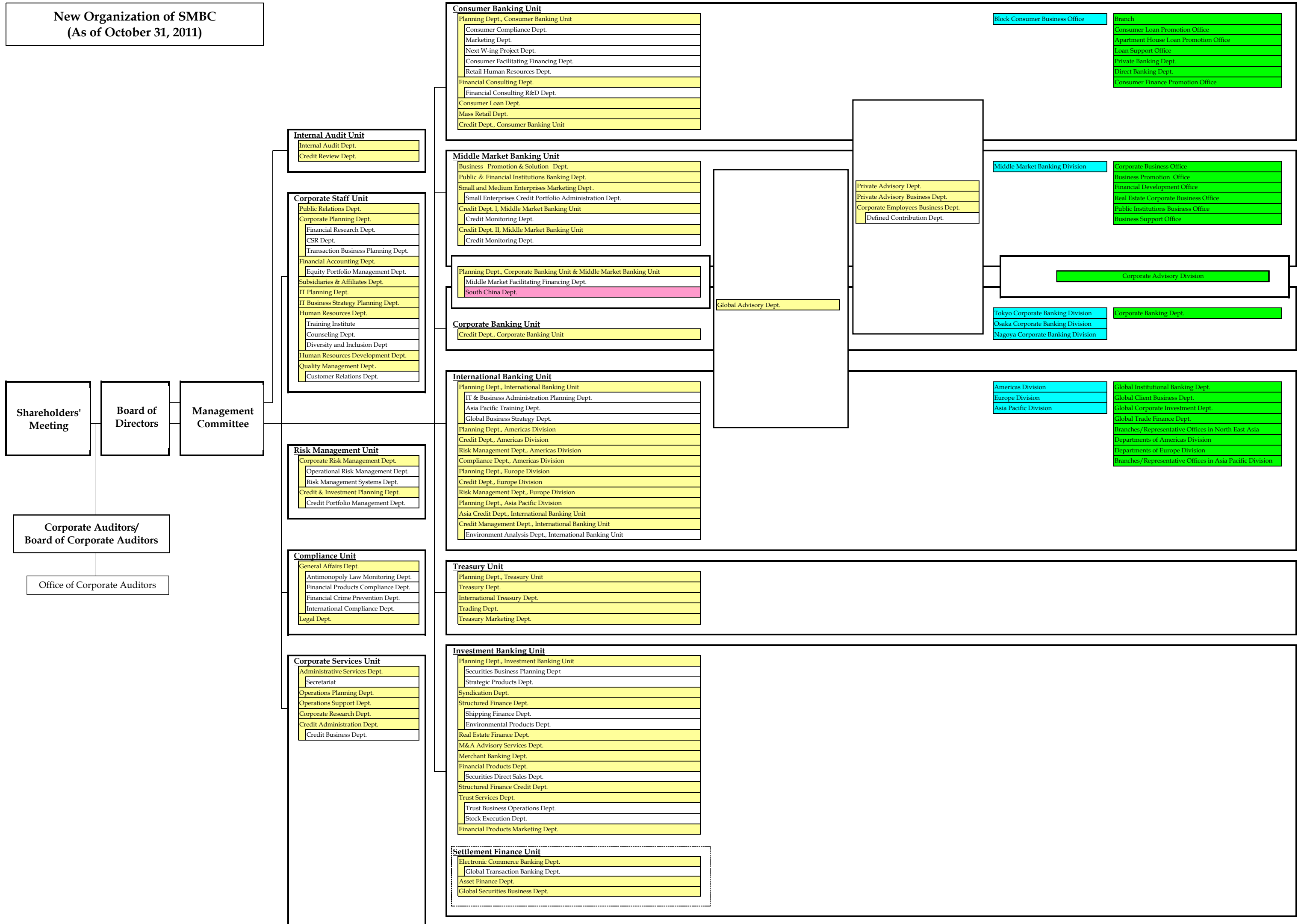
Organizational Revision of SMBC

TOKYO, October 31, 2011 --- Sumitomo Mitsui Banking Corporation (SMBC, President: Takeshi Kunibe) announced today the establishment of “South China Department.”

South China Department, established in Hong Kong under the supervision of Planning Department, Corporate Banking Unit & Middle Market Banking Unit, will further enhance our ability to capture the active business flows and opportunities in the South China Economic Zone, including Hong Kong, and respond quickly and flexibly to our Japanese clients’ needs.

(End)

**New Organization of SMBC
(As of October 31, 2011)**



Former Organization of SMBC

